

KS1 English Quiz - Rhyming Words 1 (Questions)

This is our first quiz about rhyming words. This quiz helps KS1 children identify rhyming words. Using rhyming words in their poems and stories will add to their existing knowledge of literacy and English. The National Curriculum states that Year 1 students should be able to appreciate rhymes and thus be able to identify them when reading or reciting a poem.

A rhyme is when two words are different but they sound the same. The words 'blue' and 'flew' are completely different but they rhyme. Test your knowledge on rhyming words.

1. Which word rhymes with shin?



- thin
- hat
- slime
- lolly

2. Which word rhymes with hat?



- pit
- sat
- chin
- red

3. Which word doesn't belong in this group?



- hop
- happy
- stop
- shop

4. Which word doesn't belong in this group?



- red
- head
- bed
- show

5. Which word rhymes with shark?



- shin
- fish
- bark
- happy

6. Which word doesn't belong in this group?



- string
- rat
- flat
- cat

7. Which word doesn't belong in this group?



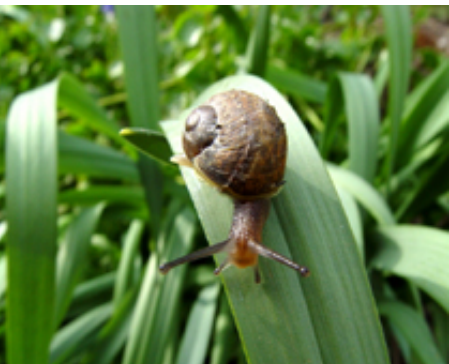
- shine
- fine
- lane
- line

8. Which word rhymes with chair?



- pear
- head
- stone
- rubber

9. Which word rhymes with snail?



- whale
- fit
- fat
- shine

10. Which word doesn't belong in this group?



- king
- flight
- fling
- wing

KS1 English Quiz - Rhyming Words 1 (Answers)

1. Which word rhymes with shin?



- thin
- hat
- slime
- lolly

The shin is the area at the front of your leg, below the knee.

2. Which word rhymes with hat?



- pit
- sat
- chin
- red

Words that rhyme often have the same letters in, like 'hat' and 'sat' both have 'at' in them.

3. Which word doesn't belong in this group?



- hop
- happy
- stop
- shop

A female rabbit is called a doe and a male is called a buck.

4. Which word doesn't belong in this group?



- red
- head
- bed
- show

The red stripes on the American flag stand for courage.

5. Which word rhymes with shark?



- shin
- fish
- bark
- happy

A whale shark can be up to 14 metres long - now that's Scary !

6. Which word doesn't belong in this group?



- string
- rat
- flat
- cat

Some cats can jump up to five times their own height.

7. Which word doesn't belong in this group?



- shine
- fine
- lane
- line

If you study light, then you would say you study optics.

8. Which word rhymes with chair?



- pear
- head
- stone
- rubber

Often, words that rhyme will belong to the same phonics group. So 'air' and 'ear' make the same phonics sound.

9. Which word rhymes with snail?



- whale
- fit
- fat
- shine

The sounds 'ai', 'ay' and 'a_e' are all in the same phonics group. This means any words with these sounds in them will rhyme.

10. Which word doesn't belong in this group?



- king
- flight
- fling
- wing

King George VI was the king before our current queen - Queen Elizabeth.