

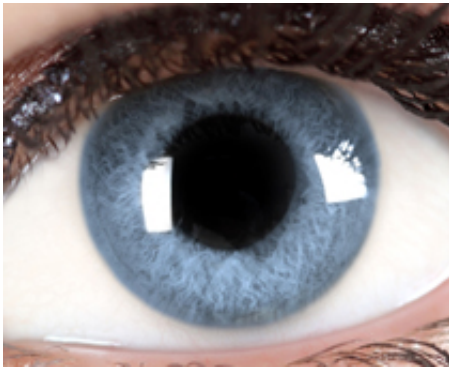
## KS1 Maths Quiz - Year 2 Shapes - Describing 2D Shapes (Questions)

This quiz addresses the requirements of the National Curriculum KS1 Maths and Numeracy for children aged 6 and 7 in year 2. Specifically this quiz is aimed at the section dealing with naming and describing 2D shapes and related everyday objects fluently.

When talking about 2-dimensional shapes and other related objects, Year 2 children will understand that they can use different words to describe their properties. They will use language such as sides, edges, corners and faces and recognise that some shapes have the same name but may look different.

This quiz will familiarise your child with the language used to describe 2-D shapes so that they can accurately name them and other related objects.

1. The coloured part of the eye is a...



- rectangle
- square
- triangle
- circle

2. This little girl is holding...



- a triangle and a circle
- a triangle and a square
- a circle and a rectangle
- a rectangle and a square

3. What shape is this clock face?



- A rectangle
- A circle
- A square
- A triangle

4. A square is a kind of...



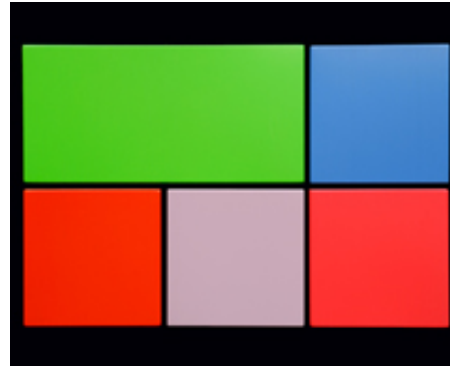
- sphere
- triangle
- circle
- rectangle

5. Which shape has the most corners



- They all have the same number of corners
- The circle
- The triangle
- The square

6. How are rectangles different to squares?



- They don't have as many corners
- They have 4 sides of different lengths
- They have two long and two short sides
- They have more sides

7. What shape are the pairs of triangles making?



- Oblongs
- Circles
- Triangles
- Squares

8. This pattern is made up from rectangles. Which shape wouldn't fit together as well?



- Triangles
- Circles
- Squares
- Cubes

9. This triangle is called an equilateral triangle because all its sides and angles are..



- different lengths
- the same colour
- made of plastic
- the same

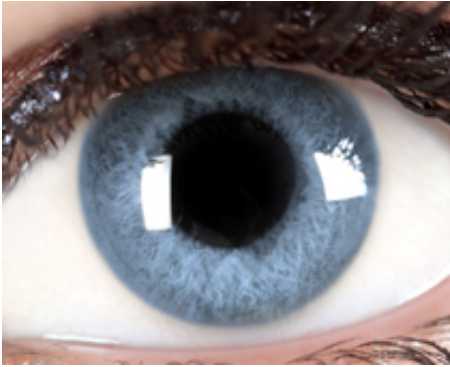
10. This road sign is a...



- triangle
- square
- oval
- oblong

## KS1 Maths Quiz - Year 2 Shapes - Describing 2D Shapes (Answers)

1. The coloured part of the eye is a...



- rectangle
- square
- triangle
- circle

The iris and pupil are both circles

2. This little girl is holding...



- a triangle and a circle
- a triangle and a square
- a circle and a rectangle
- a rectangle and a square

A triangle has three straight sides and a circle has one curved side

3. What shape is this clock face?



- A rectangle
- A circle
- A square
- A triangle

All four sides are the same length

4. A square is a kind of...



- sphere
- triangle
- circle
- rectangle

A rectangle has four sides - a square is a kind of rectangle with four equal sides

5. Which shape has the most corners



- They all have the same number of corners
- The circle
- The triangle
- The square

The square has four corners, the triangle has three and the circle has no corners

6. How are rectangles different to squares?



- They don't have as many corners
- They have 4 sides of different lengths
- They have two long and two short sides
- They have more sides

Squares have 4 sides of equal length

7. What shape are the pairs of triangles making?



- Oblongs
- Circles
- Triangles
- Squares

Two right-angled triangles pushed together can make a square

8. This pattern is made up from rectangles. Which shape wouldn't fit together as well?



- Triangles
- Circles
- Squares
- Cubes

Because circles are curved, they don't fit together at all!

9. This triangle is called an equilateral triangle because all its sides and angles are..



- different lengths
- the same colour
- made of plastic
- the same

Equilateral means equal or the same

10. This road sign is a...



- triangle
- square
- oval
- oblong

Even though it is tilted, the shape is still a square