

KS1 Science Quiz - Animals - Life Cycle of a Frog (Questions)

This quiz addresses the requirements of the National Curriculum KS1 Science for children aged 5 and 6 in years 1 and 2. Specifically this quiz is aimed at the section dealing with animals and the life-cycle of a frog.

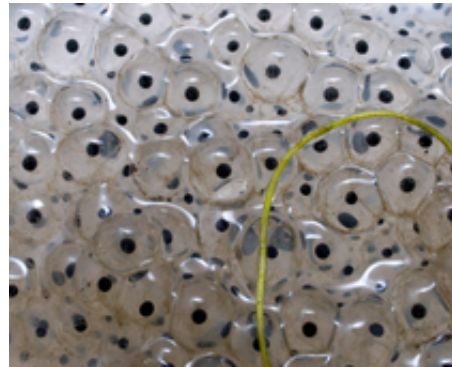
When you have studied animals at school you will have learned about frogs. You may have seen frog spawn and tadpoles in ponds. Frogs are animals with interesting life-cycles. They spend all their life near water or in damp places. Frogs like to hide away. How much do you know about the life-cycle of a frog?

1. Where are you most likely to find a frog?



- In a field
- On a lawn
- In a tree
- Near a pond

2. Frogs lay their eggs in ponds. What do we call their eggs?



- Frogspawn
- Hens' eggs
- Duck eggs
- Tadpoles

3. What hatch from the eggs of frogspawn and swim in the pond?



- Frogs
- Fish
- Hens
- Tadpoles

4. Look closely. What has this tadpole grown?



- Arms
- Legs
- Fins
- Claws

5. This tadpole is turning into a froglet. A froglet is a young frog. How many legs has the froglet?



- 2
- 4
- 6
- 8

6. When will you find frogspawn and tadpoles?



- Christmas
- Spring
- Summer
- Autumn

7. The tadpole grows legs. What does the tadpole lose as it changes into an adult frog?



- Arms
- Tail
- Head
- Body

8. Which one of these is an adult?



- Frogspawn
- Tadpole
- Froglet
- Frog

9. What do frogs eat?



- Flies
- Leaves
- Seeds
- Fruit

10. How do frogs catch their food?



- With their legs
- With a stick
- With their tongues
- With their feet

KS1 Science Quiz - Animals - Life Cycle of a Frog (Answers)

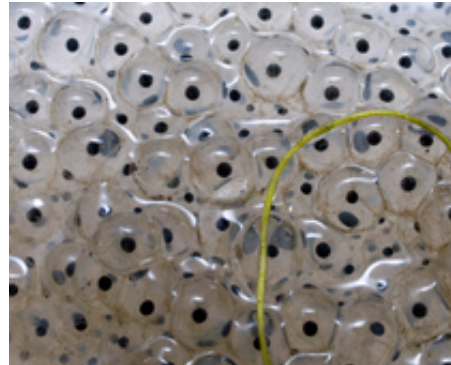
1. Where are you most likely to find a frog?



- In a field
- On a lawn
- In a tree
- Near a pond

There are some tree frogs, but not in this country

2. Frogs lay their eggs in ponds. What do we call their eggs?



- Frogspawn
- Hens' eggs
- Duck eggs
- Tadpoles

What does frogspawn look like?

3. What hatch from the eggs of frogspawn and swim in the pond?



- Frogs
- Fish
- Hens
- Tadpoles

Tadpoles look like tiny baby fish. They have long tails

4. Look closely. What has this tadpole grown?



- Arms
- Legs
- Fins
- Claws

How many legs has it grown so far? - Two

5. This tadpole is turning into a froglet. A froglet is a young frog. How many legs has the froglet?



- 2
- 4
- 6
- 8

Young frogs still have a tail

6. When will you find frogspawn and tadpoles?



- Christmas
- Spring
- Summer
- Autumn

Frogspawn appears in ponds in early spring - in February and March

7. The tadpole grows legs. What does the tadpole lose as it changes into an adult frog?



- Arms
- Tail
- Head
- Body

Young frogs have a tail, but they lose it as they grow into adults

8. Which one of these is an adult?



- Frogspawn
- Tadpole
- Froglet
- Frog

What sound do frogs make?

9. What do frogs eat?



- Flies
- Leaves

- Seeds
- Fruit

Frogs are carnivores. As well as flies they also eat slugs and worms

10. How do frogs catch their food?



- With their legs
- With a stick
- With their tongues
- With their feet

Frogs have really long, sticky tongues. They do not chew their food. They swallow it whole!