

KS1 Spelling Quiz - Year 2 - Ending with le (Questions)

This 'Ending with le' spelling quiz tests KS1 children on words that end with this digraph. This is the most common ending to a word with this sound. All the spellings have been taken from the National Curriculum.

When a word ends in the 'al/au/le' sound it is more often than not written 'le'. Obviously there are lots of exceptions but this quiz is all about these 'le' ending words. See if you can spell the missing words.

1. Put the milk on the ____.



- tabel
- tabal
- table
- tabaul

2. Squish the ____ and put it in a ____.



- apple and bottle
- aple and bottle
- apple and bottle
- apple and bottel

3. The bird in front is a big ____ and the one behind is a ____ bird.



- eajle and little
- eagle and litle
- eegle and little
- eagle and little

4. Don't disrupt me, I'm in the ____ of a ____.



- middle and puzzle
- midle and puzzle
- middle and puzle
- middle and puzle

5. The ____ began to ____.



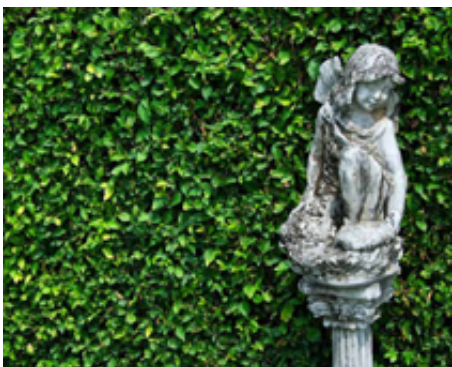
- castale and crumble
- kastle and crumble
- castle and crumble
- castle and cwumble

6. Can I have a free ____ of the chocolate bar called ____.



- sampple and Ripple
- sample and Ripple
- sammple and Ripple
- sarmple and Ripple

7. If they aren't careful those ____ will ____ over that statue.



- peple and topple
- people and topple
- people and topple
- people and tople

8. Put the ____ in at an ____.



- cable and anggle
- kable and angle
- cabble and angle
- cable and angle

9. My ____ went to the ____.



- unckle and jungle
- uncle and jungle
- unkle and jungle
- unccle and jungle

10. Get ____ because we are reading The ____.



- comfeetable and Bible
- comftable and Bible
- comfortable and Bible
- comfortable and Bibble

KS1 Spelling Quiz - Year 2 - Ending with le (Answers)

1. Put the milk on the ____.



- tabel
- tabal
- table
- tabaul

All these words end with the same sound but this quiz is on words that end 'le'.

3. The bird in front is a big ____ and the one behind is a ____ bird.



- eajle and little
- eagle and litle
- eegle and little
- eagle and little

A baby eagle is called a fledgling or eaglet.

2. Squish the ____ and put it in a ____.



- apple and bottle
- aple and bottle
- apple and bottle
- apple and bottel

This would then make apple juice!

4. Don't disrupt me, I'm in the ____ of a ____.



- middle and puzzle
- midle and puzzle
- middle and puzle
- middle and puszle

A puzzle could mean anything that confuses you or an actual physical puzzle with pieces that you need to slot together, like a jigsaw.

5. The ____ began to ____.



- castale and crumble
- kastle and crumble
- castle and crumble
- castle and cwumble

Would you like to live in a castle?

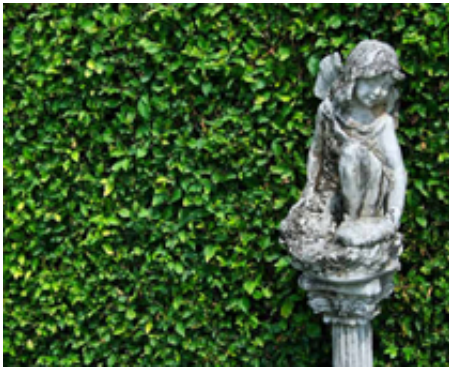
6. Can I have a free ____ of the chocolate bar called ____.



- sampple and Ripple
- sample and Ripple
- sammple and Ripple
- sarmple and Ripple

The reason Ripple has a capital letter is because that is its official name.

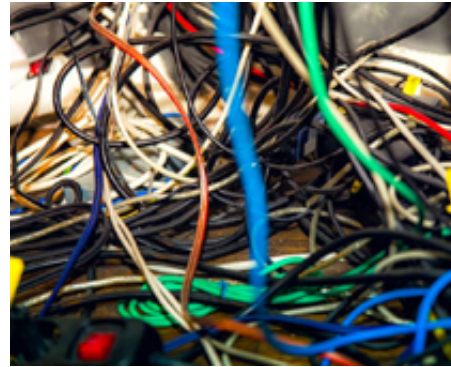
7. If they aren't careful those ____ will ____ over that statue.



- peple and topple
- people and topple
- peepole and topple
- people and tople

Toppole means lean on something too much and cause it to fall over.

8. Put the ____ in at an ____.



- cable and anggle
- kable and angle
- cabble and angle
- cable and angle

Make sure you don't get the words angel and angle confused!

9. My ____ went to the ____.



- unckle and jungle
- uncle and jungle
- unkle and jungle
- unccle and jungle

Your uncle is either your mother's brother or your father's brother.

10. Get ____ because we are reading The ____.



- comfeetable and Bible
- comftable and Bible
- comfortable and Bible
- comfortable and Bibble

The Bible is extremely long but luckily it is sectioned into two halves: the Old Testament and the New Testament.